

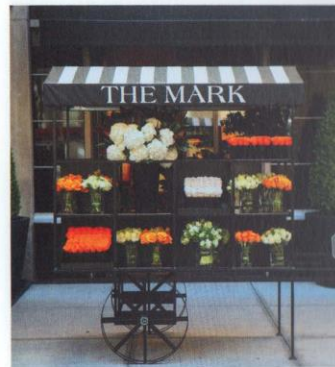
# whitewall

Issue 10, May 2017

## The Mark

By Staff Writer

### HOTELS



#### THE MARK *Upper East Side*

*Juliette Longuet recommends: Indulging in the caramel popcorn or the truffle pizza.*

The Mark's 1920s Art Deco building shines with a Jacques Grange–designed interior, with artwork and furnishings by handpicked collaborators of his like Ron Arad, Eric Schmitt, Paul Mathieu, and Mattia Bonetti. The luxury hotel also offers undeniable amenities, such as breakfast in bed or a tent in your room for kids.



#### THE SURREY *Upper East Side*

*Juliette Longuet recommends: Having a bite to eat at Café Boulud.*

Located on the Upper East Side, this 1926 Beaux Arts building accurately reflects the allure of New York City's top luxury hotel. Personal space and intimacy are important aspects of the hotel's design, similar to that of the surrounding private residences. The Surrey prides itself on its \$30 million art collection, which adds to its tranquility.

# whitewaller



Maison Gerard at Collective Design

**NEW YORK**  
**2017**